

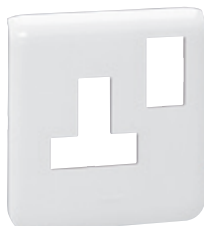
## Arteor™ mounting supports and special plates



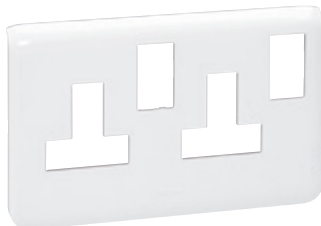
5 760 16



5 754 50



5 754 70



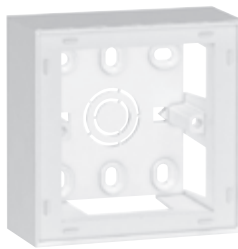
5 754 80



Support frame and plate selection charts **p. 414-421**

Pack	Cat.Nos	Panel mounting supports
10	5 760 15	For 1 to 3 mm thick panels For 1 module Clips into a 28 x 53.5 mm aperture
10	5 760 16	For 2 modules Clips into a 58 x 53.5 mm aperture
10	5 760 13	<b>Modular support</b> For mounting 2-module mechanisms on symmetrical rail
10	5 754 50	<b>Dedicated plates for trunking</b> 1-gang plate 2 modules (supplied with support frame)
5	5 754 60	2-gang plate 2 x 2 modules (supplied with support frame)
10	5 754 70	White plate for 1-gang 13 A switched socket
5	5 754 80	White plate for 2-gang 13 A switched socket
5	5 751 90	<b>IP 44 plate</b> For British and German standards For mounting in 1-gang box Support frame supplied

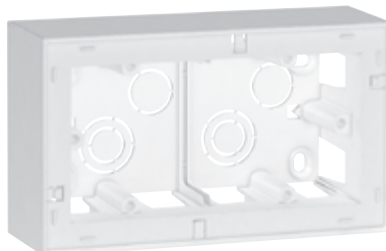
## Arteor™ mounting boxes



5 723 90



5 751 90



5 723 92



Support frame and plate selection charts **p. 414-421**

Pack	Cat.Nos	Flush-mounting boxes
1	<b>NEW</b> 6 890 36	For British standard 6 and 8-module plates and frames For 6 modules 211.4 x 75.7 x 50.8 mm
1	6 890 38	For 8 modules 231 x 75.7 x 50.8 mm
1	6 890 28	For 2 x 6 modules 212 x 143 x 42 mm
1	0 818 56	For 3 x 6 modules 212 x 212 x 42 mm
10	5 723 90	<b>Surface-mounting boxes</b> For British, German and French standard For 2 modules - 1 gang 38 mm depth
5	5 723 92	For 4 modules 2 x 2 modules - 2 gang 48 mm depth (suitable for shaver sockets)
2	5 723 96	For 2 x 6 modules 38 mm depth