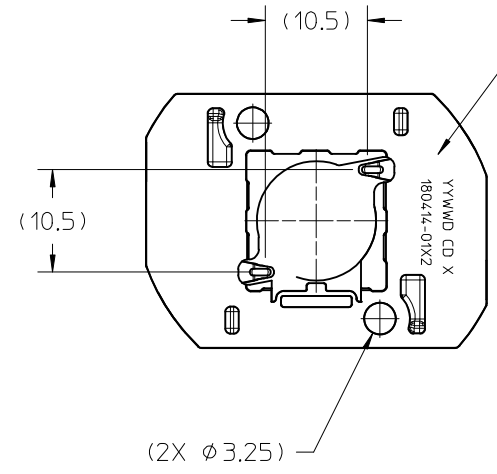
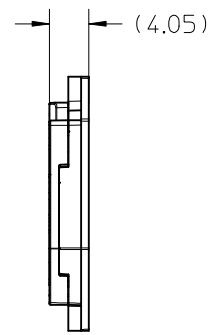
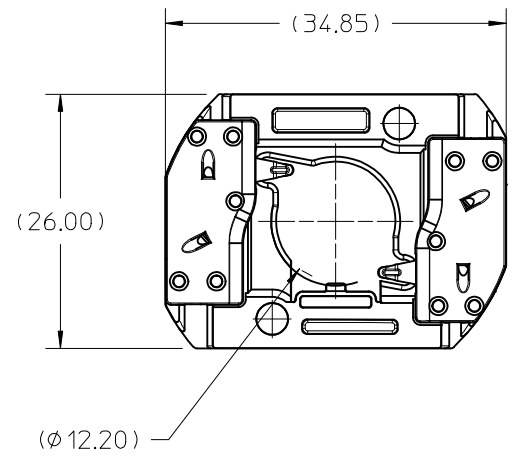
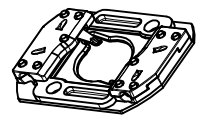


10	9	8	7	6	5	4	3	2	1
PART NUMBER	DESCRIPTION			MATERIAL			AGENCY APPROVAL		
180414-0102	COB LED HOLDER 13.5MM X 13.5MM			POLYAMIDE (PA66) GLASS FILLED, COLOR: NATURAL			UL496 FILE E345583		
180414-0112	COB LED HOLDER 13.5MM X 13.5MM			POLYESTER (PBT) GLASS FILLED, COLOR: WHITE			UL496 FILE E345583		
180414-0202	COB LED HOLDER 13.5MM X 13.5MM WITH TAB CAP			POLYAMIDE (PA66) GLASS FILLED, COLOR: NATURAL			UL496 FILE E345583		
180414-0212	COB LED HOLDER 13.5MM X 13.5MM WITH TAB CAP			POLYESTER (PBT) GLASS FILLED, COLOR: WHITE			UL496 FILE E345583		

HOLDER ASSEMBLY
180414-0102, 180414-0112



PART MARKED WITH
DATE CODE (YYWWD)
MFG PLANT (CD)
REVISION (X)
PART NUMBER (180414-01X2)



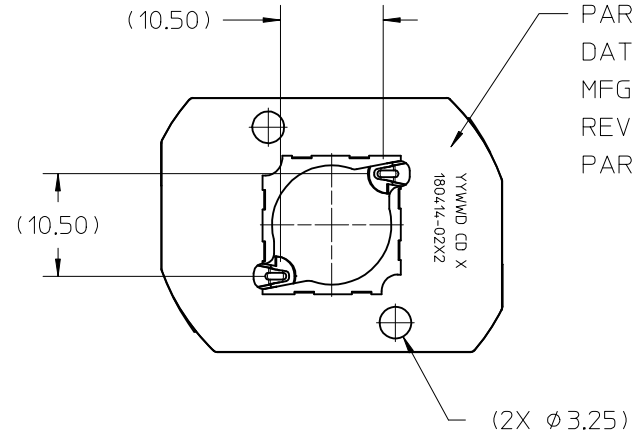
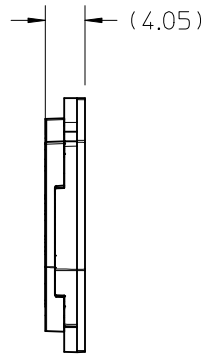
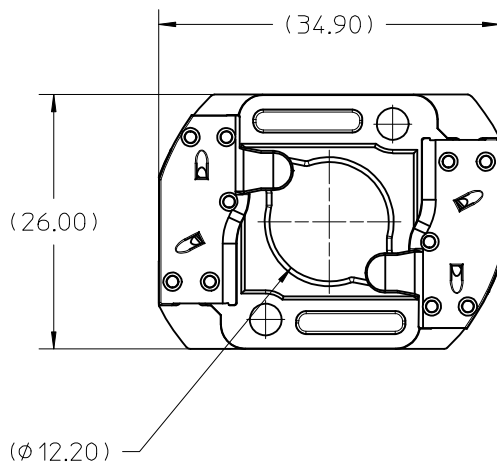
ISO VIEW 1
SCALE 1:1

- NOTES:
1. MATERIALS: HOUSING AND CAPS: SEE CHART, TERMINAL: COPPER ALLOY
 2. FINISHES: TERMINAL: NICKEL (Ni) UNDERPLATE 1.27 μm, WIRE TRAP SELECT TIN (Sn) 2.54 μm, LED CONTACT SELECT GOLD (Au) 0.76 μm
 3. PRODUCT SPECIFICATION: PS-180414-001
 4. PACKAGING SPECIFICATION: PK-180419-005
 5. SEE CHART FOR AGENCY APPROVAL INFORMATION
 6. ELV AND ROHS COMPLIANT.
 7. SEE SHEET 3 FOR APPLICATION NOTES.

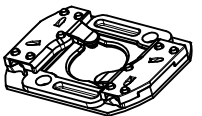
ENTER DESCRIPTION EC NO: SSL2017-0012 DRWNLZABJANOVSKI 2016/08/16 CHKD: APPR:GMEYER 2016/09/21 REV C2	QUALITY SYMBOLS ▽/0 ▽/0 ▽/0	GENERAL TOLERANCES (UNLESS SPECIFIED) <table border="1"> <thead> <tr> <th></th> <th>mm</th> <th>INCH</th> </tr> </thead> <tbody> <tr> <td>4 PLACES</td> <td>± ---</td> <td>± ---</td> </tr> <tr> <td>3 PLACES</td> <td>± ---</td> <td>± ---</td> </tr> <tr> <td>2 PLACES</td> <td>± 0.13</td> <td>± ---</td> </tr> <tr> <td>1 PLACE</td> <td>± 0.25</td> <td>± ---</td> </tr> <tr> <td>0 PLACE</td> <td>± ---</td> <td>± ---</td> </tr> </tbody> </table>		mm	INCH	4 PLACES	± ---	± ---	3 PLACES	± ---	± ---	2 PLACES	± 0.13	± ---	1 PLACE	± 0.25	± ---	0 PLACE	± ---	± ---	DIMENSION STYLE MM ONLY DRAWN BY DATE MDEVITO 2012/04/16 CHECKED BY DATE MCOLE 2012/08/06 APPROVED BY DATE DMCGOWAN 2012/08/06	SCALE 2:1 DESIGN UNITS METRIC THIRD ANGLE PROJECTION	TITLE COB LED HOLDER ASSEMBLY 13.5MM X 13.5MM SQUARE molex DOCUMENT NO. SD-180414-102 SHEET NO. 1 OF 3
		mm	INCH																				
	4 PLACES	± ---	± ---																				
	3 PLACES	± ---	± ---																				
2 PLACES	± 0.13	± ---																					
1 PLACE	± 0.25	± ---																					
0 PLACE	± ---	± ---																					
DRAFT WHERE APPLICABLE MUST REMAIN WITHIN DIMENSIONS		SEE CHART	THIS DRAWING CONTAINS INFORMATION THAT IS PROPRIETARY TO MOLEX INCORPORATED AND SHOULD NOT BE USED WITHOUT WRITTEN PERMISSION																				
		ANGULAR ±1/2°																					
		MATERIAL NO.																					

10 9 8 7 6 5 4 3 2 1

HOLDER ASSEMBLY WITH TAB CAP
180414-0202, 180414-0212



PART MARKED WITH
DATE CODE (YYWWD)
MFG PLANT (CD)
REVISION (X)
PART NUMBER (180414-02X2)

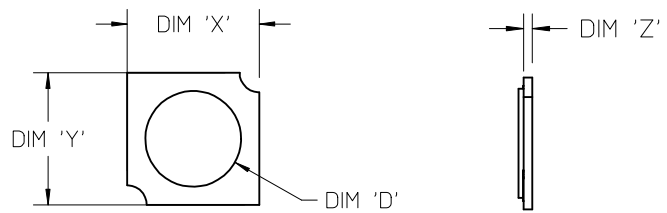


ISO VIEW 2
SCALE 1:1

ENTER DESCRIPTION EC NO: SSL2017-0012 DRWNL: ZABJANOVSKI 2016/08/16 CHKD: APPR: GMEYER 2016/09/21 REV	QUALITY SYMBOLS $\nabla = 0$ $\nabla = 0$ $\nabla = 0$	GENERAL TOLERANCES (UNLESS SPECIFIED) mm INCH 4 PLACES ± --- ± --- 3 PLACES ± --- ± --- 2 PLACES ± 0.13 ± --- 1 PLACE ± 0.25 ± --- 0 PLACE ± --- ± --- ANGULAR ± 1/2° DRAFT WHERE APPLICABLE MUST REMAIN WITHIN DIMENSIONS	DIMENSION STYLE MM ONLY DRAWN BY DATE MDEVITO 2012/04/16 CHECKED BY DATE MCOLE 2012/08/06 APPROVED BY DATE DMCGOWAN 2012/08/06 MATERIAL NO.	SCALE 2:1 DESIGN UNITS METRIC THIRD ANGLE PROJECTION	TITLE COB LED HOLDER ASSEMBLY 13.5MM X 13.5MM SQUARE molex DOCUMENT NO. SD-180414-102 SHEET NO. 2 OF 3
	C2	SEE CHART	THIS DRAWING CONTAINS INFORMATION THAT IS PROPRIETARY TO MOLEX INCORPORATED AND SHOULD NOT BE USED WITHOUT WRITTEN PERMISSION		

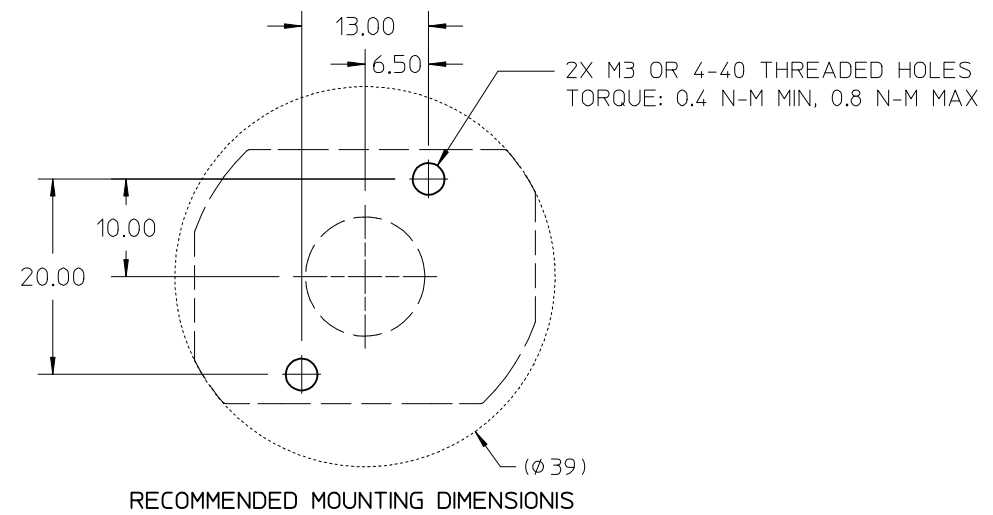
9 8 7 6 5 4 3 2 1

COB MFG	TYPE	DIM 'X'	DIM 'Y'	DIM 'Z'	DIM 'D'
CITIZEN	CLL020, CLL022, CLU024, CLU026, CLU028	13.5	13.5	0.90	11.2
TRIDONIC	SLE G5 LES10	13.5	13.5	0.90	9.4
SEOUL	ZC6	13.5	13.5	0.90	10.0
CITIZEN	CLU025, CLU027	13.5	13.5	0.90	7.4
CITIZEN	CLU700, CLU701	13.5	13.5	0.90	7.8
EVERLIGHT	EAHP1313WA*, EAHP1313WB*, EAHP1313WC*	13.5	13.5	0.90	10.8
EVERLIGHT	EA1313 36V/3W	13.5	13.5	0.90	10.8
EVERLIGHT	EA1313 36V/6W	13.5	13.5	0.90	10.8
EVERLIGHT	EA1313 36V/10W	13.5	13.5	0.90	10.8
EVERLIGHT	EA1313 36V/13W	13.5	13.5	0.90	10.8
VOSSLOH-SCHWABE	DMC122C	13.5	13.5	1.00	10.0



COB LED
SCALE 2:1

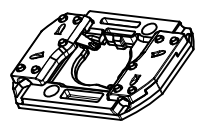
- NOTES:
1. APPLICATION SPECIFICATION: AS-180412-001
 2. FOR USE WITH: 13.5 MM X 13.5 MM COB
 3. WIRE GAUGE: 18, 20 AND 22 AWG, SOLID OR STRANDED WITH TIN OVERCOAT. STRIP LENGTH 10MM +2.0/-0.0MM. RECOMMENDED MAXIMUM DIAMETER AFTER TINNING: 1.40MM. LARGER DIAMETER WIRES ARE ACCEPTABLE IF FULLY INSERTABLE IN WIRE TRAP AND NO WITHDRAWAL WITHIN 20N FORCE.
 4. IF REWORK IS REQUIRED, WIRE MUST BE REPLACED WITH SAME AWG AND TYPE. CARE MUST BE TAKEN NOT TO DAMAGE WIRE TRAP. REWORK IS ACCEPTABLE IF WIRE IS FULLY INSERTABLE IN WIRE TRAP AND NO WITHDRAWAL WITHIN 20N FORCE.



RECOMMENDED MOUNTING DIMENSIONS

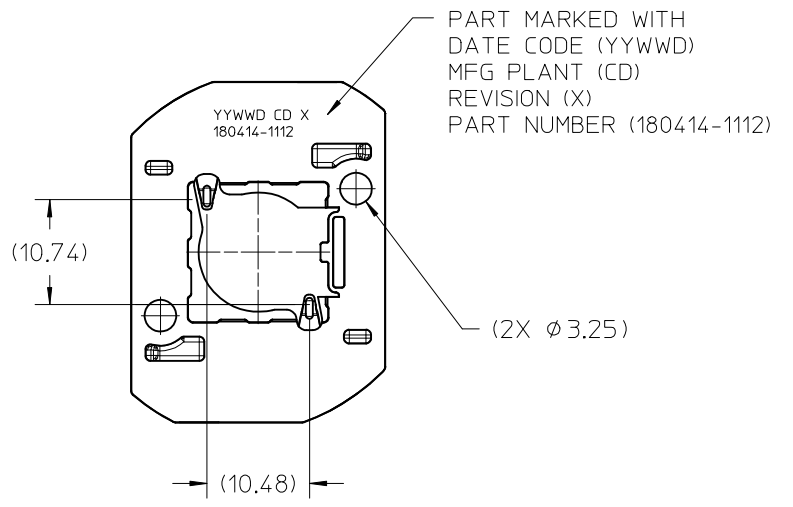
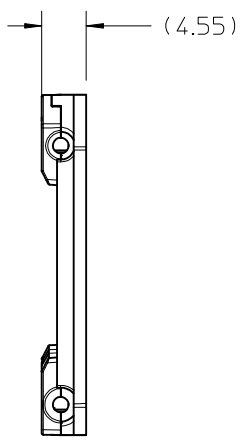
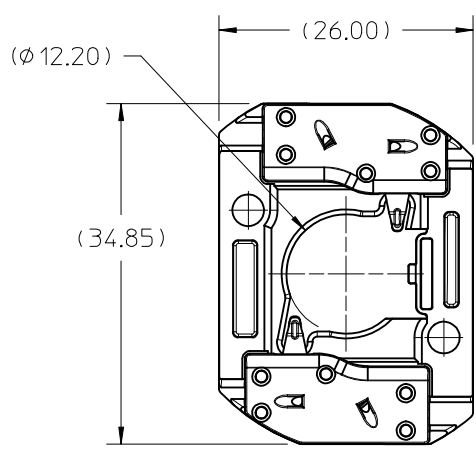
ENTER DESCRIPTION EC NO: SSL2017-0012 DRAWN: ZAB, JANOVSKI 2016/08/16 CHKD: APPR: GMEYER 2016/09/21	QUALITY SYMBOLS ▽=0 ▽=0 ▽=0	GENERAL TOLERANCES (UNLESS SPECIFIED)		DIMENSION STYLE MM ONLY		SCALE 2:1	DESIGN UNITS METRIC	THIRD ANGLE PROJECTION
		4 PLACES ± --- ± ---	DRAWN BY MDEVITO	DATE 2012/04/16	TITLE COB LED HOLDER ASSEMBLY 13.5MM X 13.5MM SQUARE			
		3 PLACES ± --- ± ---	CHECKED BY MCOLE	DATE 2012/08/06				
		2 PLACES ± 0.13 ± ---	APPROVED BY DMCGOWAN	DATE 2012/08/06	molex DOCUMENT NO. SD-180414-102			
1 PLACE ± 0.25 ± ---	MATERIAL NO. SEE CHART		SHEET NO. 3 OF 3					
0 PLACE ± --- ± ---	ANGULAR ± 1/2°		THIS DRAWING CONTAINS INFORMATION THAT IS PROPRIETARY TO MOLEX INCORPORATED AND SHOULD NOT BE USED WITHOUT WRITTEN PERMISSION					
C2	DRAFT WHERE APPLICABLE MUST REMAIN WITHIN DIMENSIONS	SIZE B						

10	9	8	7	6	5	4	3	2	1
PART NUMBER	DESCRIPTION		POCKET DEPTH	HOUSING	TERMINAL	CAP			
180414-1112	COB LED HOLDER ASSEMBLY		0.90	180413-1112	180155-0133	180154-0105			
180414-2112	COB LED HOLDER ASSEMBLY		0.75	180413-2112	180155-0133	180154-0105			



ISO VIEW 1
SCALE 1:1

P/N 180414-1112 HOLDER ASSEMBLY
(0.90 POCKET DEPTH)



PART MARKED WITH
DATE CODE (YYWWD)
MFG PLANT (CD)
REVISION (X)
PART NUMBER (180414-1112)

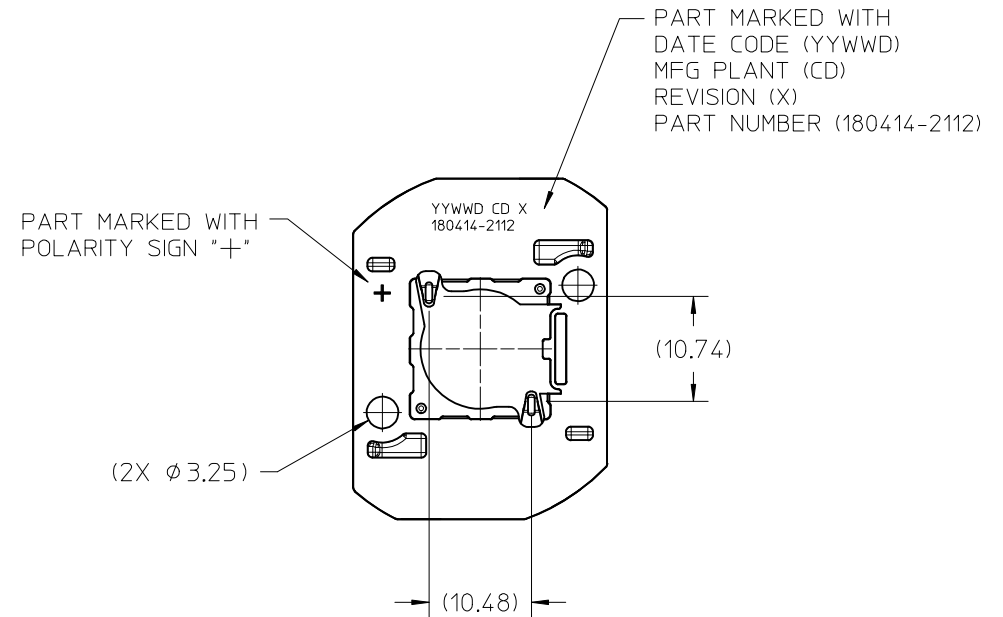
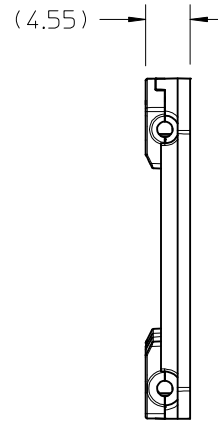
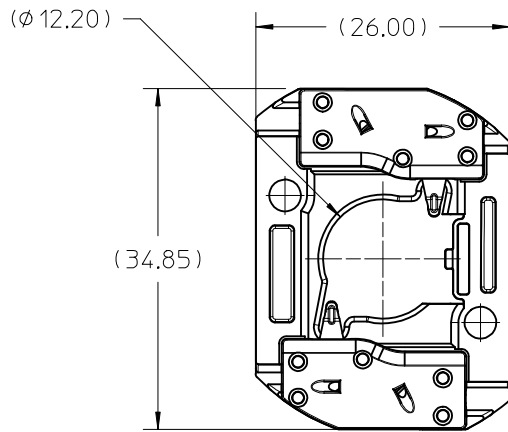
- NOTES:
1. MATERIALS: HOUSING AND CAPS: POLYESTER PBT GLASS FILLED; COLOR: WHITE; TERMINAL: COPPER ALLOY
 2. FINISHES: TERMINAL CONTACT: SELECT GOLD OVER NICKEL WIRE TRAP: SELECT TIN OVER NICKEL
 3. PRODUCT SPECIFICATION: 180414-0000-PS
 4. PACKAGING SPECIFICATION: PK-180419-005
 5. UL:OLFB2 UL496 FILE NO. E345583
 6. ELV AND ROHS COMPLIANT
 7. FOR USE WITH: 13.5 MM X 13.5 MM COB LED
 8. WIRE GAUGE: 18, 20, AND 22 AWG, SOLID OR STRANDED WITH TIN OVERCOAT. STRIP LENGTH 10MM +2.0/-0.0MM.
 9. ALL DIMENSIONS IN PARENTHESES (XX.XX) ARE FOR REFERENCE ONLY

ENTER DESCRIPTION EC NO: SSL2017-0024 DRWNLZABJANOVSKI 2017/02/21 CHKD: APPR:BPISZCZOR 2017/03/07 C4	REVISION DESCRIPTION REV	QUALITY SYMBOLS $\nabla F=0$ $\nabla F=0$ $\nabla F=0$	GENERAL TOLERANCES (UNLESS SPECIFIED)		DIMENSION STYLE MM ONLY		SCALE 2:1	DESIGN UNITS METRIC	THIRD ANGLE PROJECTION
		4 PLACES ± --- ± --- 3 PLACES ± --- ± --- 2 PLACES ± 0.13 ± --- 1 PLACE ± 0.25 ± --- 0 PLACE ± --- ± ---	mm INCH	DRAWN BY DATE MCOLE 2013/12/09	TITLE COB LED HOLDER ASSEMBLY 13.5 MM X 13.5 MM SQUARE				
		ANGULAR ± 1/2°		CHECKED BY DATE MCOLE 2013/12/09					
		DRAFT WHERE APPLICABLE MUST REMAIN WITHIN DIMENSIONS		APPROVED BY DATE DMCGOWAN 2013/12/09				DOCUMENT NO. SD-180414-112	SHEET NO. 1 OF 5

SEE CHART
 THIS DRAWING CONTAINS INFORMATION THAT IS PROPRIETARY TO MOLEX INCORPORATED AND SHOULD NOT BE USED WITHOUT WRITTEN PERMISSION

10 9 8 7 6 5 4 3 2 1

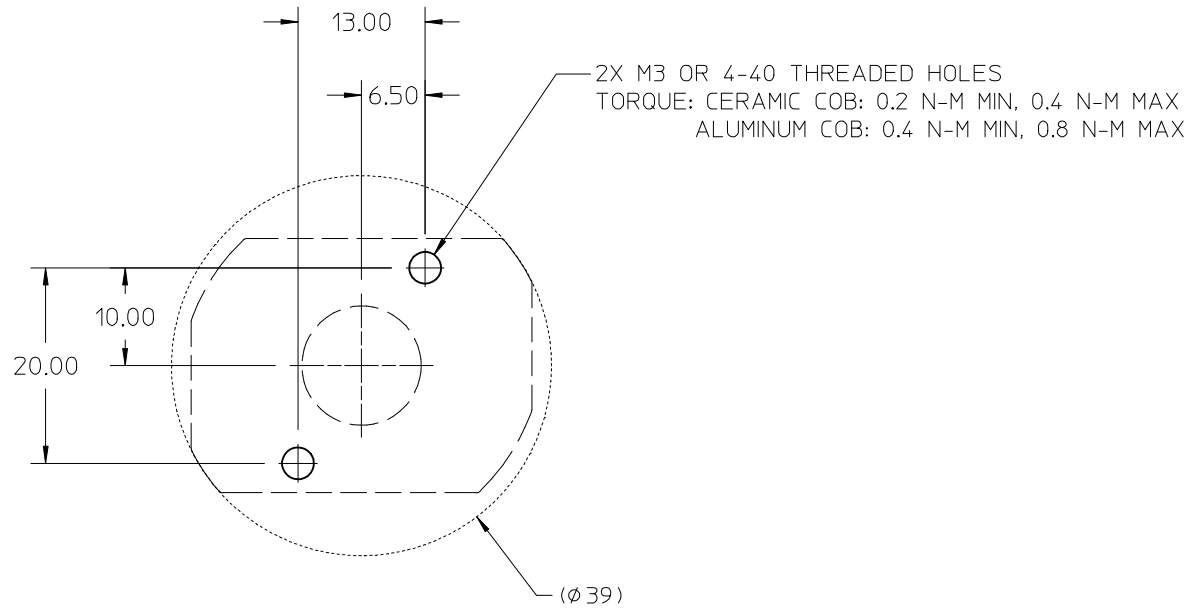
P/N 180414-2112 HOLDER ASSEMBLY (0.75 POCKET DEPTH)



ENTER DESCRIPTION EC NO: SSL2017-0024 DRWNL:ZABJANOVSKI 2017/02/21 CHKD: APPR:BPISZCZOR 2017/03/07 REV C4	QUALITY SYMBOLS $\nabla F/0$ $\nabla F/0$ $\nabla F/0$	GENERAL TOLERANCES (UNLESS SPECIFIED) <table border="1"> <thead> <tr> <th></th> <th>mm</th> <th>INCH</th> </tr> </thead> <tbody> <tr> <td>4 PLACES</td> <td>± ---</td> <td>± ---</td> </tr> <tr> <td>3 PLACES</td> <td>± ---</td> <td>± ---</td> </tr> <tr> <td>2 PLACES</td> <td>± 0.13</td> <td>± ---</td> </tr> <tr> <td>1 PLACE</td> <td>± 0.25</td> <td>± ---</td> </tr> <tr> <td>0 PLACE</td> <td>± ---</td> <td>± ---</td> </tr> </tbody> </table>		mm	INCH	4 PLACES	± ---	± ---	3 PLACES	± ---	± ---	2 PLACES	± 0.13	± ---	1 PLACE	± 0.25	± ---	0 PLACE	± ---	± ---	DIMENSION STYLE MM ONLY DRAWN BY DATE MCOLE 2013/12/09 CHECKED BY DATE MCOLE 2013/12/09 APPROVED BY DATE DMCGOWAN 2013/12/09 MATERIAL NO.	SCALE 2:1 DESIGN UNITS METRIC THIRD ANGLE PROJECTION	TITLE COB LED HOLDER ASSEMBLY 13.5 MM X 13.5 MM SQUARE molex DOCUMENT NO. SD-180414-112 SHEET NO. 2 OF 5
		mm	INCH																				
	4 PLACES	± ---	± ---																				
	3 PLACES	± ---	± ---																				
	2 PLACES	± 0.13	± ---																				
1 PLACE	± 0.25	± ---																					
0 PLACE	± ---	± ---																					
DRAFT WHERE APPLICABLE MUST REMAIN WITHIN DIMENSIONS		SEE CHART SIZE B	THIS DRAWING CONTAINS INFORMATION THAT IS PROPRIETARY TO MOLEX INCORPORATED AND SHOULD NOT BE USED WITHOUT WRITTEN PERMISSION																				

9 8 7 6 5 4 3 2 1

10 9 8 7 6 5 4 3 2 1



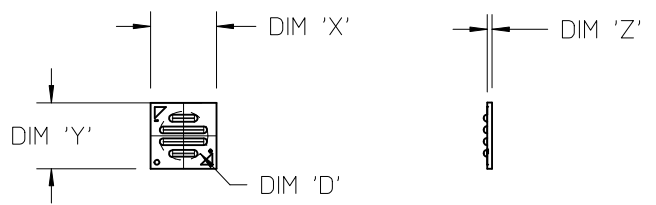
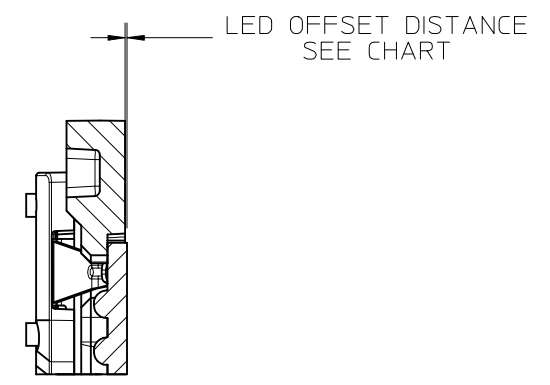
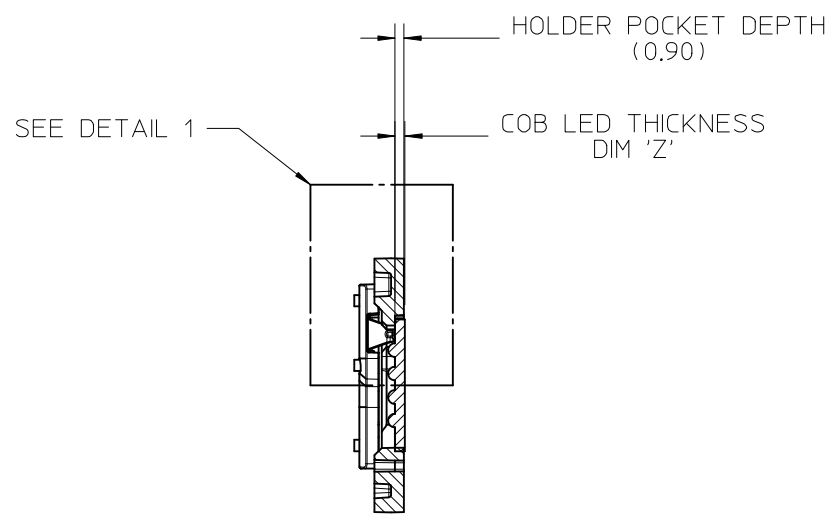
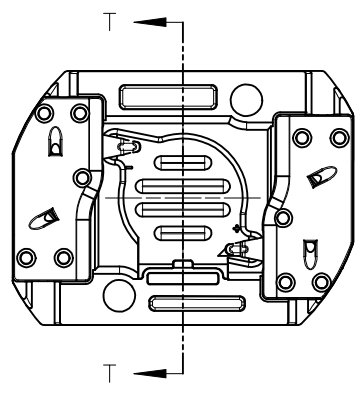
RECOMMENDED MOUNTING DIMENSIONS

ENTER DESCRIPTION EC NO: SSL2017-0024 DRWNL:ZABJANOVSKI 2017/02/21 CHKD: APPR:BPISZCZOR 2017/03/07	QUALITY SYMBOLS $\nabla F=0$ $\nabla F=0$ $\nabla F=0$	GENERAL TOLERANCES (UNLESS SPECIFIED)		DIMENSION STYLE MM ONLY		SCALE 2:1	DESIGN UNITS METRIC	THIRD ANGLE PROJECTION		
				DRAWN BY MCOLE	DATE 2013/12/09	TITLE COB LED HOLDER ASSEMBLY 13.5 MM X 13.5 MM SQUARE				
				CHECKED BY MCOLE	DATE 2013/12/09					
				APPROVED BY DMCGOWAN	DATE 2013/12/09	MATERIAL NO.		DOCUMENT NO. SD-180414-112		SHEET NO. 3 OF 5
C4	REV	DRAFT WHERE APPLICABLE MUST REMAIN WITHIN DIMENSIONS		SIZE B	THIS DRAWING CONTAINS INFORMATION THAT IS PROPRIETARY TO MOLEX INCORPORATED AND SHOULD NOT BE USED WITHOUT WRITTEN PERMISSION					

9 8 7 6 5 4 3 2 1

10	9	8	7	6	5	4	3	2	1
COB MFG	TYPE	DIM 'X'	DIM 'Y'	DIM 'Z'	DIM 'D'	OFFSET			
VOSSLOH-SCHWABE	DMC122C	13.5	13.5	1.0	10.0	0.10			

ILLUSTRATION OF P/N 180414-1112 HOLDER MATED WITH LED



COB LED
SCALE 1:1

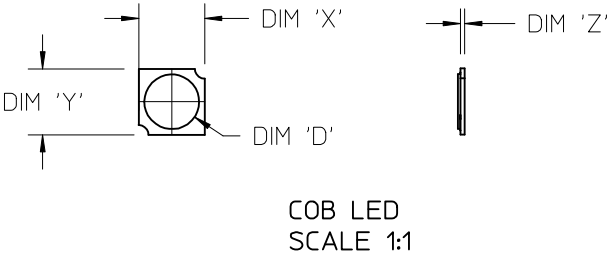
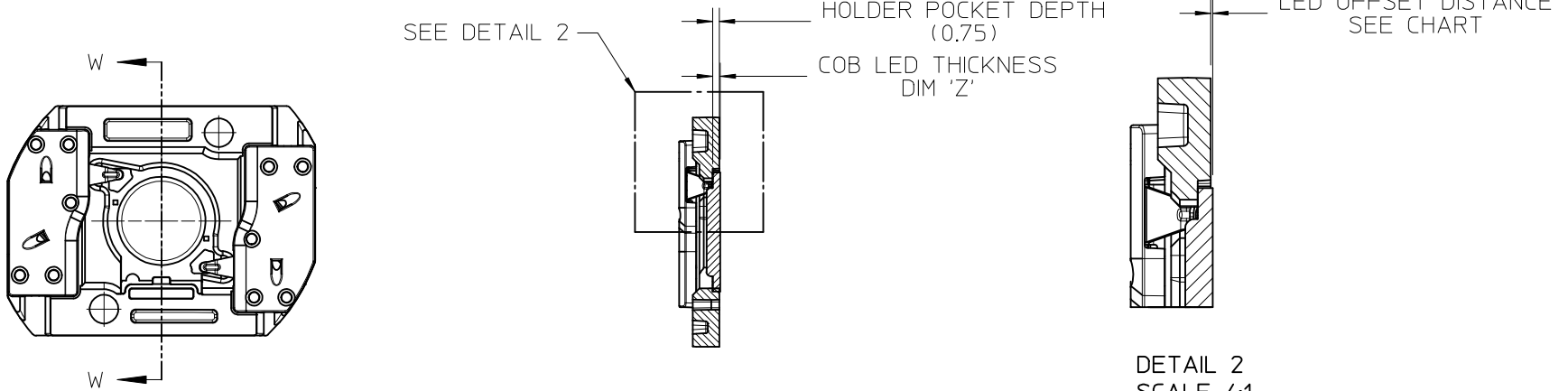
SECTION T-T

DETAIL 1
SCALE 4:1

ENTER DESCRIPTION EC NO: SSL2017-0024 DRWNL:ZAB,JANOVSKI 2017/02/21 CHKD: APPR:BP1SZCZOR 2017/03/07 C4	QUALITY SYMBOLS 	GENERAL TOLERANCES (UNLESS SPECIFIED)		DIMENSION STYLE MM ONLY		SCALE 2:1	DESIGN UNITS METRIC	THIRD ANGLE PROJECTION		
		4 PLACES	± ---	± ---	DRAWN BY	DATE	TITLE COB LED HOLDER ASSEMBLY 13.5 MM X 13.5 MM SQUARE			
		3 PLACES	± ---	± ---	MCOLE	2013/12/09				
		2 PLACES	± 0.13	± ---	CHECKED BY	DATE				
		1 PLACE	± 0.25	± ---	MCOLE	2013/12/09				
0 PLACE	± ---	± ---	APPROVED BY	DATE	DOCUMENT NO. SD-180414-112		SHEET NO. 4 OF 5			
ANGULAR ±1/2°		MATERIAL NO. SEE CHART		THIS DRAWING CONTAINS INFORMATION THAT IS PROPRIETARY TO MOLEX INCORPORATED AND SHOULD NOT BE USED WITHOUT WRITTEN PERMISSION						
DRAFT WHERE APPLICABLE MUST REMAIN WITHIN DIMENSIONS		SIZE B								

10	9	8	7	6	5	4	3	2	1
COB MFG	TYPE			DIM 'X'	DIM 'Y'	DIM 'Z'	DIM 'D'	OFFSET	
CITIZEN	CLL020, CLL022, CLU024, CLU026, CLU028			13.5	13.5	0.90	11.2	0.15	
SEOUL	ZC6			13.5	13.5	0.90	10.0	0.15	
TRIDONIC	SLE G5 LES10			13.5	13.5	0.90	9.4	0.15	
CITIZEN	CLU025, CLU027			13.5	13.5	0.90	7.4	0.15	
CITIZEN	CLU700, CLU701			13.5	13.5	0.90	7.8	0.15	
EVERLIGHT	EAHP1313WA*, EAHP1313WB*, EAHP1313WC*			13.5	13.5	0.90	10.8	0.15	
EVERLIGHT	EA1313 36V/3W			13.5	13.5	0.90	10.8	0.15	
EVERLIGHT	EA1313 36V/6W			13.5	13.5	0.90	10.8	0.15	
EVERLIGHT	EA1313 36V/10W			13.5	13.5	0.90	10.8	0.15	
EVERLIGHT	EA1313 36V/13W			13.5	13.5	0.90	10.8	0.15	
VOSSLOH-SCHWABE	DMC122C			13.5	13.5	1.00	10.0	0.25	

ILLUSTRATION OF P/N 180414-2112 HOLDER MATED WITH LED



ENTER DESCRIPTION EC NO: SSL2017-0024 DRWNL:ZAB, JANOVSKI 2017/02/21 CHKD: APPR:BP1SZCZOR 2017/03/07 REV C4	QUALITY SYMBOLS $\nabla F/0$ $\nabla F/0$ $\nabla F/0$	GENERAL TOLERANCES (UNLESS SPECIFIED) <table border="1"> <thead> <tr> <th></th> <th>mm</th> <th>INCH</th> </tr> </thead> <tbody> <tr> <td>4 PLACES</td> <td>\pm---</td> <td>\pm---</td> </tr> <tr> <td>3 PLACES</td> <td>\pm---</td> <td>\pm---</td> </tr> <tr> <td>2 PLACES</td> <td>\pm0.13</td> <td>\pm---</td> </tr> <tr> <td>1 PLACE</td> <td>\pm0.25</td> <td>\pm---</td> </tr> <tr> <td>0 PLACE</td> <td>\pm---</td> <td>\pm---</td> </tr> </tbody> </table>		mm	INCH	4 PLACES	\pm ---	\pm ---	3 PLACES	\pm ---	\pm ---	2 PLACES	\pm 0.13	\pm ---	1 PLACE	\pm 0.25	\pm ---	0 PLACE	\pm ---	\pm ---	DIMENSION STYLE MM ONLY DRAWN BY DATE MCOLE 2013/12/09 CHECKED BY DATE MCOLE 2013/12/09 APPROVED BY DATE DMCGOWAN 2013/12/09	SCALE 2:1 DESIGN UNITS METRIC THIRD ANGLE PROJECTION	TITLE COB LED HOLDER ASSEMBLY 13.5 MM X 13.5 MM SQUARE
		mm	INCH																				
	4 PLACES	\pm ---	\pm ---																				
	3 PLACES	\pm ---	\pm ---																				
2 PLACES	\pm 0.13	\pm ---																					
1 PLACE	\pm 0.25	\pm ---																					
0 PLACE	\pm ---	\pm ---																					
REVISIONS C4	DRAFT WHERE APPLICABLE MUST REMAIN WITHIN DIMENSIONS	MATERIAL NO. SEE CHART	DOCUMENT NO. SD-180414-112	SHEET NO. 5 OF 5																			
THIS DRAWING CONTAINS INFORMATION THAT IS PROPRIETARY TO MOLEX INCORPORATED AND SHOULD NOT BE USED WITHOUT WRITTEN PERMISSION																							