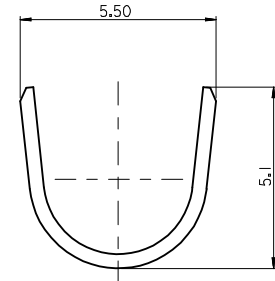


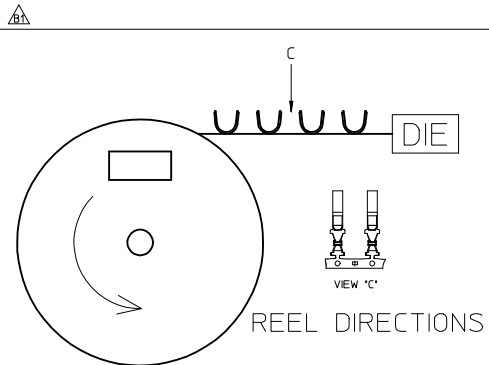
SECT. A-A



SECT. B-B

NOTES

1. APPLICABLE WIRE SIZE : AVS 0.5~0.85SQ
2. APPLICABLE WIRE SEAL PART NO: 35903-0096
3. APPLICABLE SOCKET PART NO: 35842-030\*/35843-02\*\*
4. MATERIAL: PHOSPHOR BRONZE,  
PLATING=UNPLATED, THICKNESS=0.40mm



REVISED EC NO: KTR2015-0104 2015/05/14 DRAWN:JKSE01 2015/05/14 CHKD:BCYON 2015/05/15 APPR:JYCHOI	DESCRIPTION	QUALITY SYMBOLS	GENERAL TOLERANCES (UNLESS SPECIFIED)		DIMENSION STYLE MM ONLY		SCALE 5:1	DESIGN UNITS METRIC	THIRD ANGLE PROJECTION
		$\nabla=0$ $\nabla=0$	mm	INCH	DRAWN BY Y.SIK.KIM	DATE 98/11/26	TITLE SEALED PT BULB SOCKET POSITIVE TERMINAL		
B1	REV	4 PLACES $\pm$ ---	$\pm$ ---	$\pm$ ---	CHECKED BY B.K.CHOI	DATE 98/11/30	MOLEX INCORPORATED		
		3 PLACES $\pm$ ---	$\pm$ ---	$\pm$ ---	APPROVED BY C.W.LEE	DATE 98/11/30	DOCUMENT NO. SD-35464-001		
		2 PLACES $\pm 0.20$	$\pm$ ---	$\pm$ ---	MATERIAL NO. SEE TABLE 1		SHEET NO. 1 OF 1		
		1 PLACE $\pm 0.30$	$\pm$ ---	$\pm$ ---	THIS DRAWING CONTAINS INFORMATION THAT IS PROPRIETARY TO MOLEX INCORPORATED AND SHOULD NOT BE USED WITHOUT WRITTEN PERMISSION				
			ANGULAR $\pm 1^\circ$		DRAFT WHERE APPLICABLE MUST REMAIN WITHIN DIMENSIONS				