

技术参数 Product Description

- ◆ Uses a new type impeller made of plastic or high-quality aluminum alloy, the former to the blade.
叶轮采用新型塑料或优质铝合金制成，前向式叶片。
- ◆ Scroll using galvanized steel sheet production.
蜗壳采用镀锌钢板制成。
- ◆ Impeller and external rotor motor constitute a whole, as the impeller wheel of the drive motor is air cooled efficiently.
叶轮与外转子电机构成整体，成为叶轮轮毂的驱动电机被气流高效地冷却。
- ◆ Motor protection class: IP44
电机防护等级：IP44
- ◆ Thermal overload protector brought out.
电机内有过热保护。

AC centrifugal blowers 交流离心鼓风机
Single inlet \varnothing 133 mm 单进风式



技术参数 Specifications

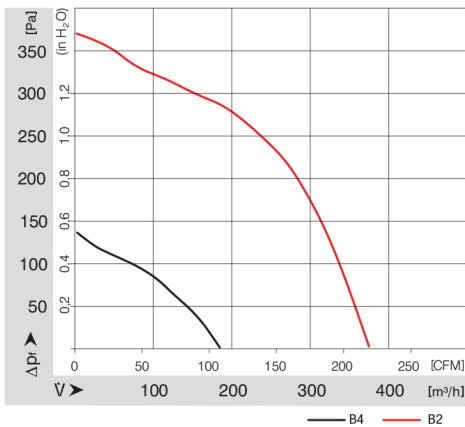


Model	Rated Voltage	Frequency	Current Amp	Rated Input Power	Speed	Max Air Flow	Max Static Pressure	Start capacitor	Noise Level
(型号)	(VAC)	(Hz)	(Amp)	(Watt)	(rpm)	(m ³ /h)	(Inch-H ₂ O)	(μ F/VDB)	(dB-A)
	(额定电压)	(频率)	(额定电流)	(额定功率)	(转速)	(风量)	(风压)	(启动电容)	(噪音)
G13392E-23L-B41	1~230	50	0.30	45	1350	180	0.51	1.5/450	62
G13392E-38L-B43	3~380	50	0.18	50	1350	180	0.51	-	62
G13392E-23L-B21	1~230	50	0.30	140	2600	360	1.37	3.0/450	70
G13392E-38L-B23	3~380	50	0.20	120	2600	360	1.37	-	70

* The max. air flow and the speed are measured in free air; max. air pressure is measured at zero air flow

* All readings are typical values at rated voltage.

特性曲线图 Characteristic curve



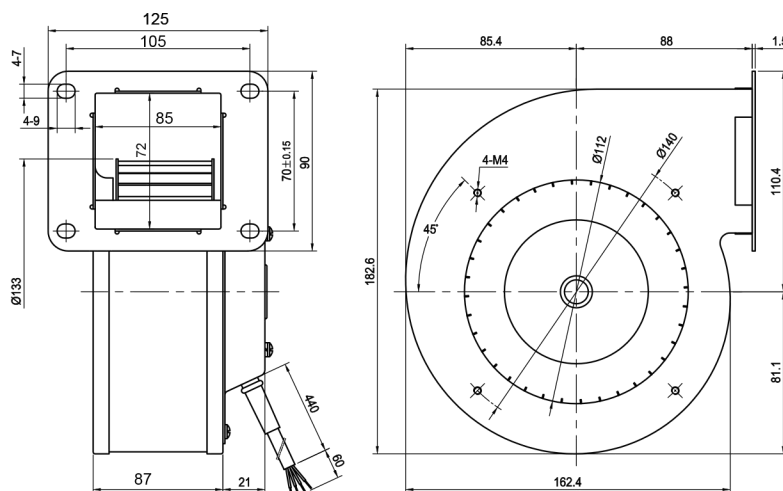
Use of the environment

- ◆ Temperature: -20° -- $+60^{\circ}$
- ◆ Relative Humidity: $\leq 90\%$
- ◆ Pressure: 55 Kpa (Considerable elevation 4000m)
- ◆ Vibration: 10-55Hz, Double amplitude 1.5mm
- ◆ 40° C when the expected life of 40,000 hours

使用环境

- ◆ 温度: -20° -- $+60^{\circ}$
- ◆ 相对湿度: $\leq 90\%$
- ◆ 气压: 55 Kpa (相当海拔4000m)
- ◆ 振动: 10-55Hz, 双振幅1.5mm
- ◆ 40° C时期望使用寿命30000小时

外形图 Dimensions (Unit:mm)



AC后倾式风机
 \varnothing 133 ~ \varnothing 400

AC单进风式风机
 \varnothing 108 ~ \varnothing 200

AC双进风式风机
 \varnothing 133 ~ \varnothing 150

AC前倾式风机
 \varnothing 108 ~ \varnothing 200

DC后倾式风机
 \varnothing 133 ~ \varnothing 355

DC单进风式风机
 \varnothing 108 ~ \varnothing 150